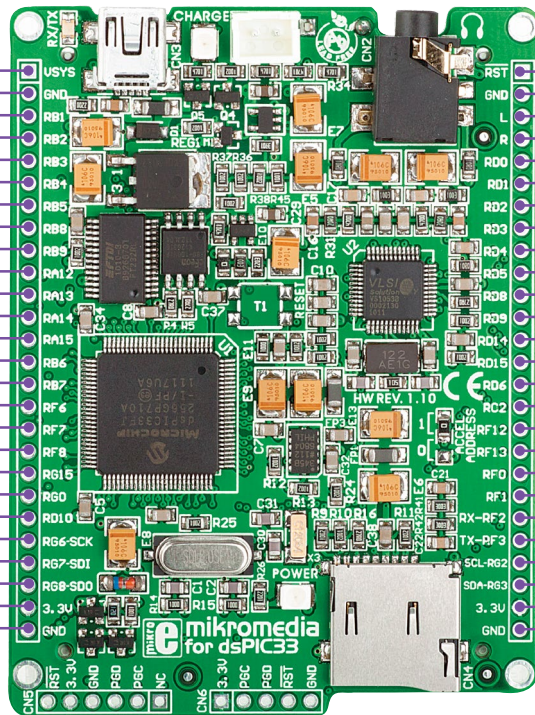


5V power supply	5V	USYS
Reference Ground	GND	GND
AN10	RB1	RB1
AN2/SS1/CN4	RB2	RB2
AN3/CN5	RB3	RB3
AN4/CN6	RB4	RB4
AN5/CN7	RB5	RB5
AN8	RB8	RB8
AN9	RB9	RB9
AN20/INT1	RA12	RA12
AN21/INT2	RA13	RA13
INT3	RA14	RA14
INT4	RA15	RA15
PGEC1/AN6/OCFA	RB6	RB6
PGED1/AN7	RB7	RB7
SPI1	SCK1/INT0	RF6
	SDI1	RF7
	SDO1	RF8
	COFS	RG15
C2RX	RG0	RD10
IC3	RD10	RD10
SPI2	SCK2/CN8	RG6
	SDI2/CN9	RG7
	SDO2/CN10	RG8
3.3V power supply	3.3V	3.3V
Reference Ground	GND	GND



Pin functions

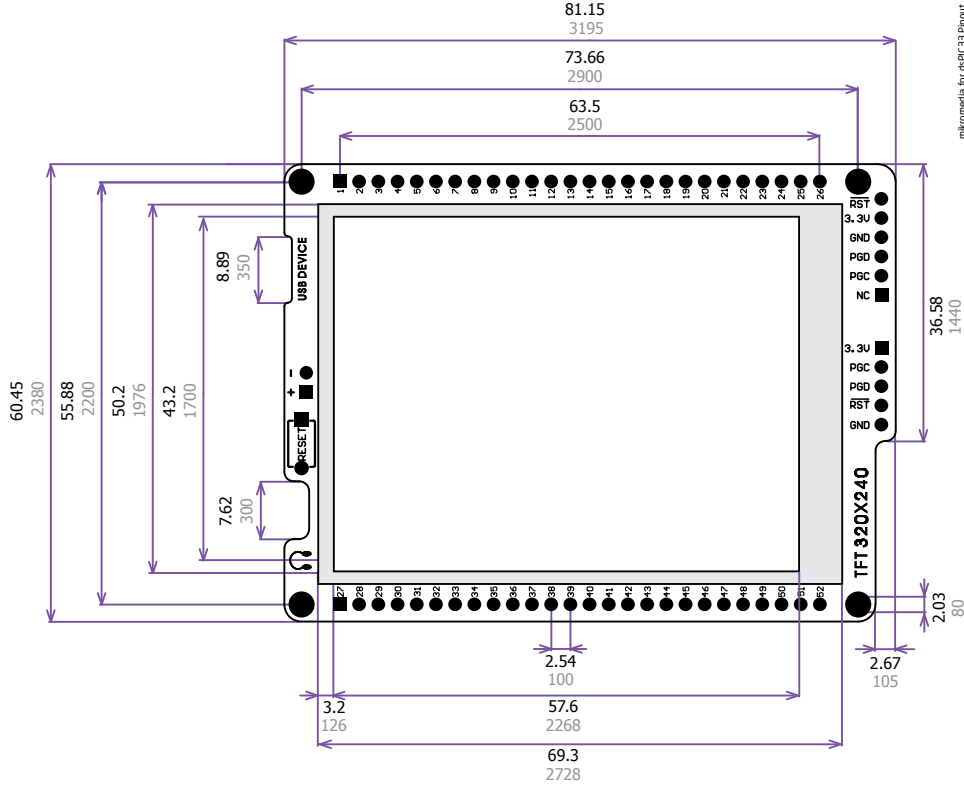
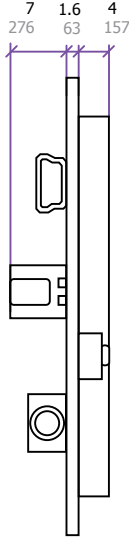


RST	Reset pin
GND	Reference Ground
L	left ch.] audio out
R	right ch.]
RD0	RD0
RD1	OC1
RD2	OC2
RD3	OC3
RD4	OC4
RD5	OC5/CN13
RD8	OC6/CN14
RD9	IC1
RD14	IC2
RD15	IC7/U1CTS/CN20
RD6	IC8/U1RTS/CN21
RC2	OC7/CN15
RF12	AN17/T3CK/T6CK
RF13	U2CTS
RF0	U2RTS
RF1	C1RX] CAN
RF2	C1TX]
RF3	U1RX] UART
RG2	U1TX]
RG3	SCL1] I2C
3.3V	SDA1]
GND	3.3V power supply
	Reference Ground

Pin functions

mikromedia for dsPIC33® - board dimensions

Legend
 mm
 mils



mikromedia for dsPIC33 Pinout
 ver. 1.10c

