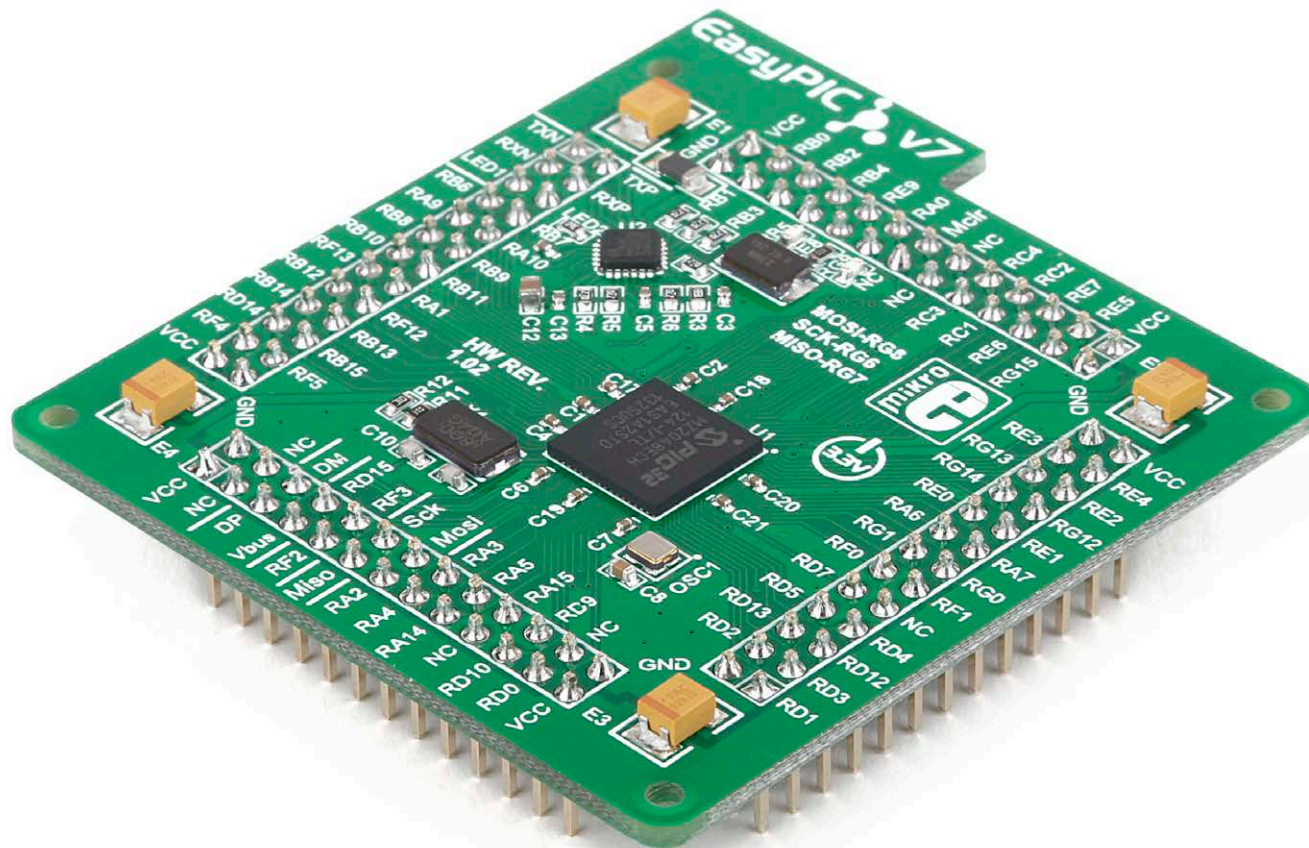


Standard 124-pin TQFP card with PIC32MZ2048ECH MCU



What's on Card

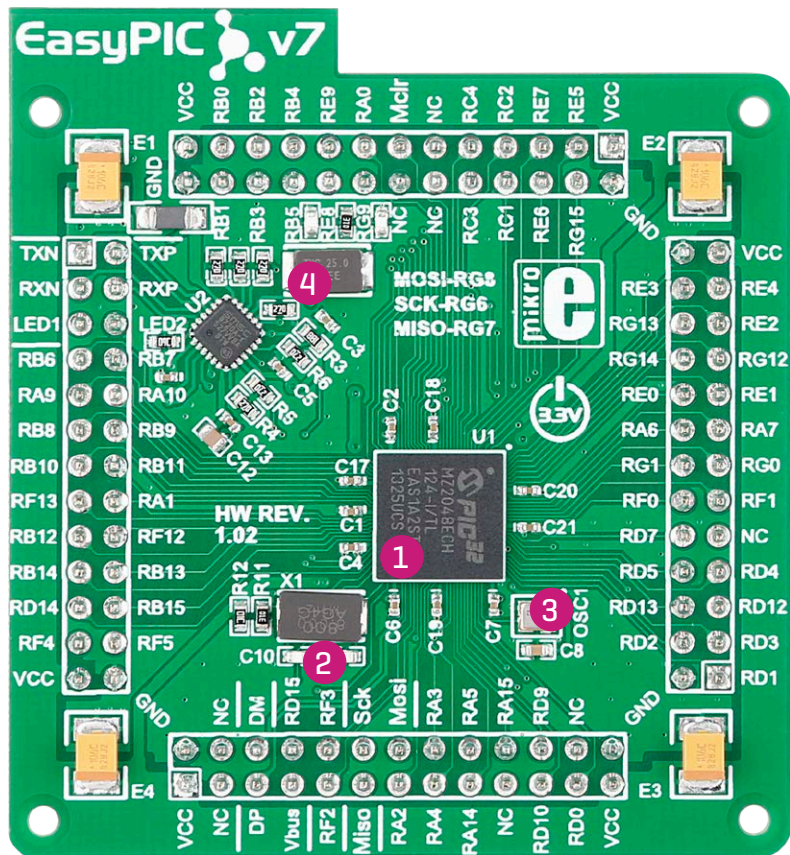


Figure 1: MCU card with PIC32MZ2048ECH124

- 1 PIC32MZ2048ECH124 microcontroller.** Featuring microAptiv DSP-enhanced core, it has up to 330 DMIPS operation, 2048KB of program memory, 512 KB RAM, and lot of internal modules.
- 2 8 MHz crystal.** We carefully chose the most convenient crystal value that provides clock frequency which can be used directly, or with the PLL multipliers and dividers to create higher MCU clock value.
- 3 32.768 MHz oscillator.** MCU card also contains 32.768 KHz crystal oscillator which provides external clock for the RTC module.
- 4 Ethernet transceiver.** MCU card contains single-chip Ethernet physical (PHY) layer transceiver which provides additional Ethernet functionality to the microcontroller.

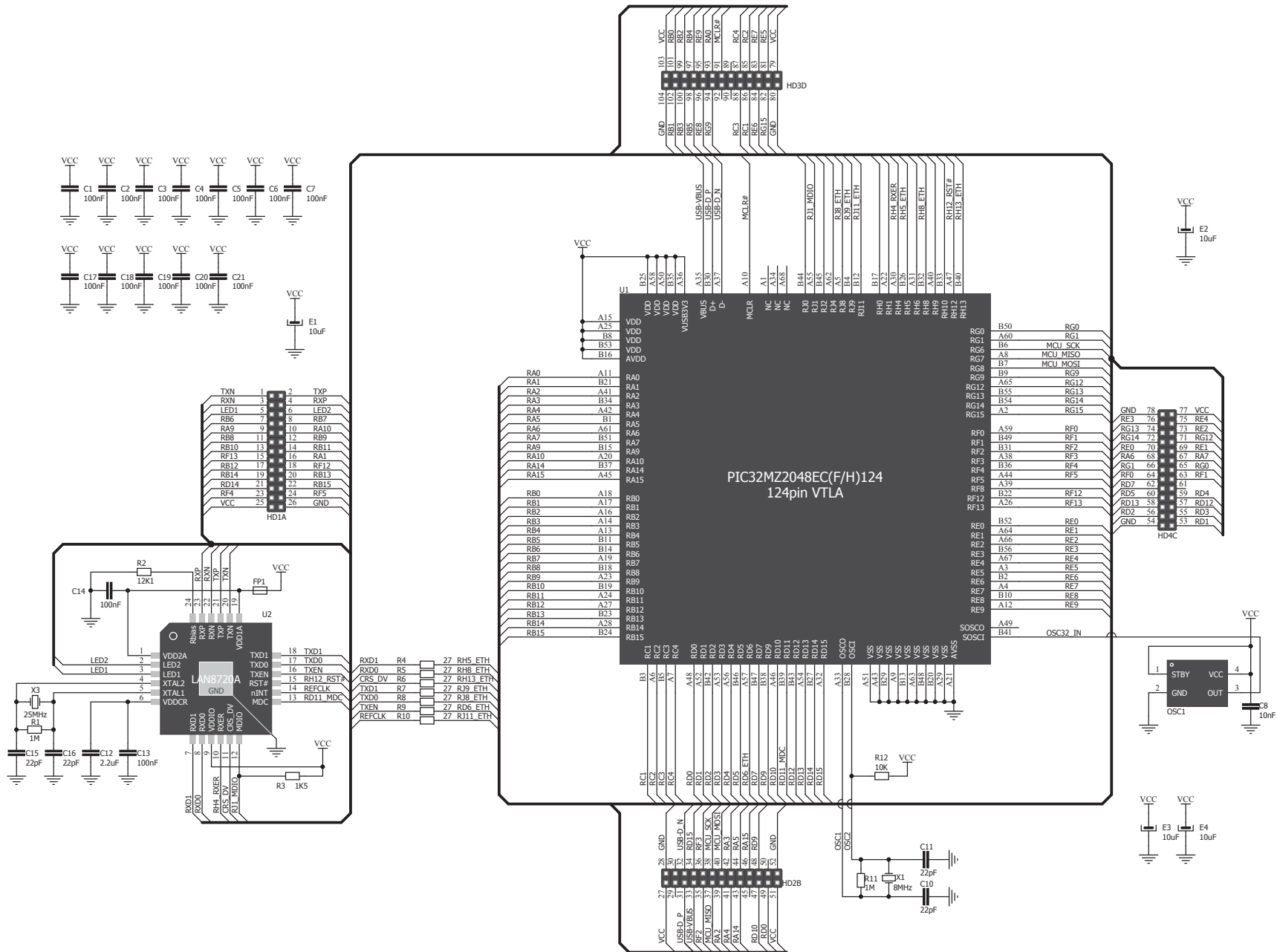


Figure 2: MCU card schematics

Card dimensions

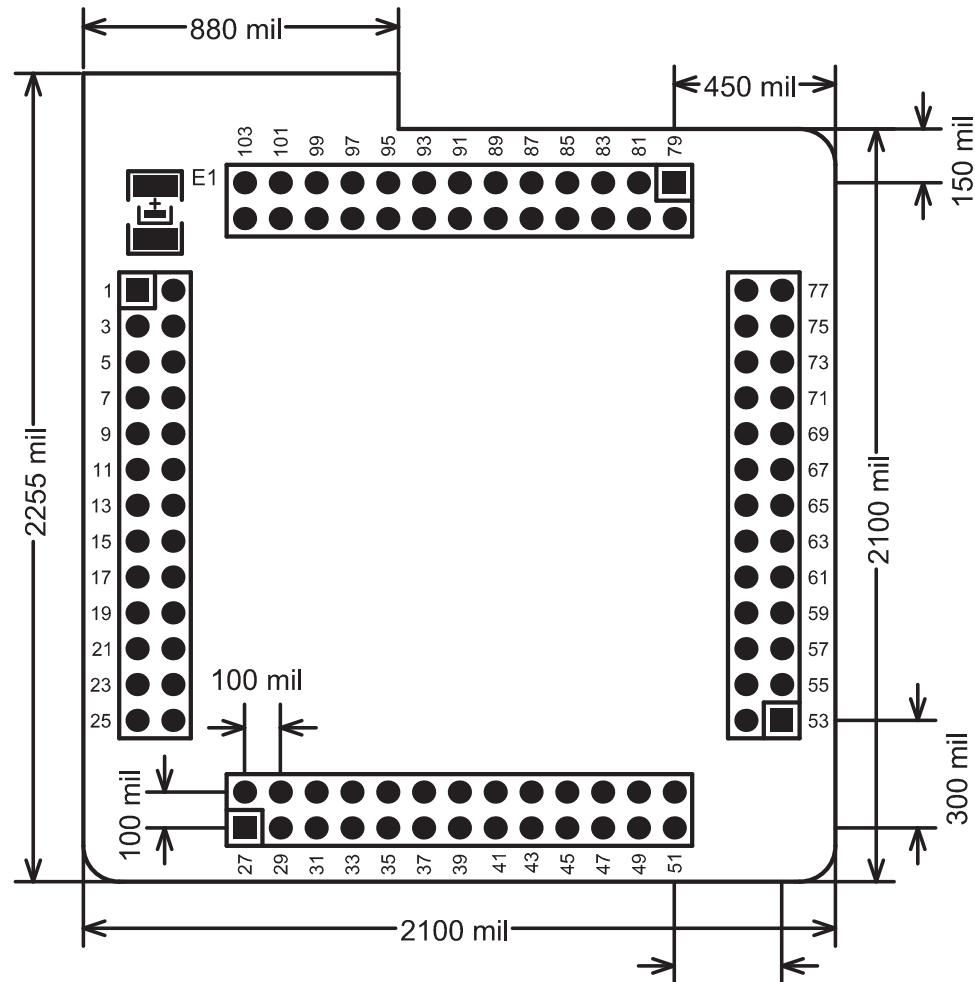
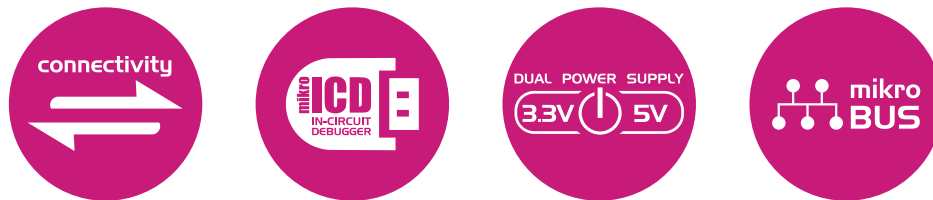


Figure 3: MCU card dimensions. Values are in mils.



If you want to learn more about our products, please visit our website at www.mikroe.com

If you are experiencing some problems with any of our products or just need additional information, please place your ticket at www.helpdesk.mikroe.com

If you have any questions, comments or business proposals, do not hesitate to contact us at office@mikroe.com