

LTE Patch Antenna Specification

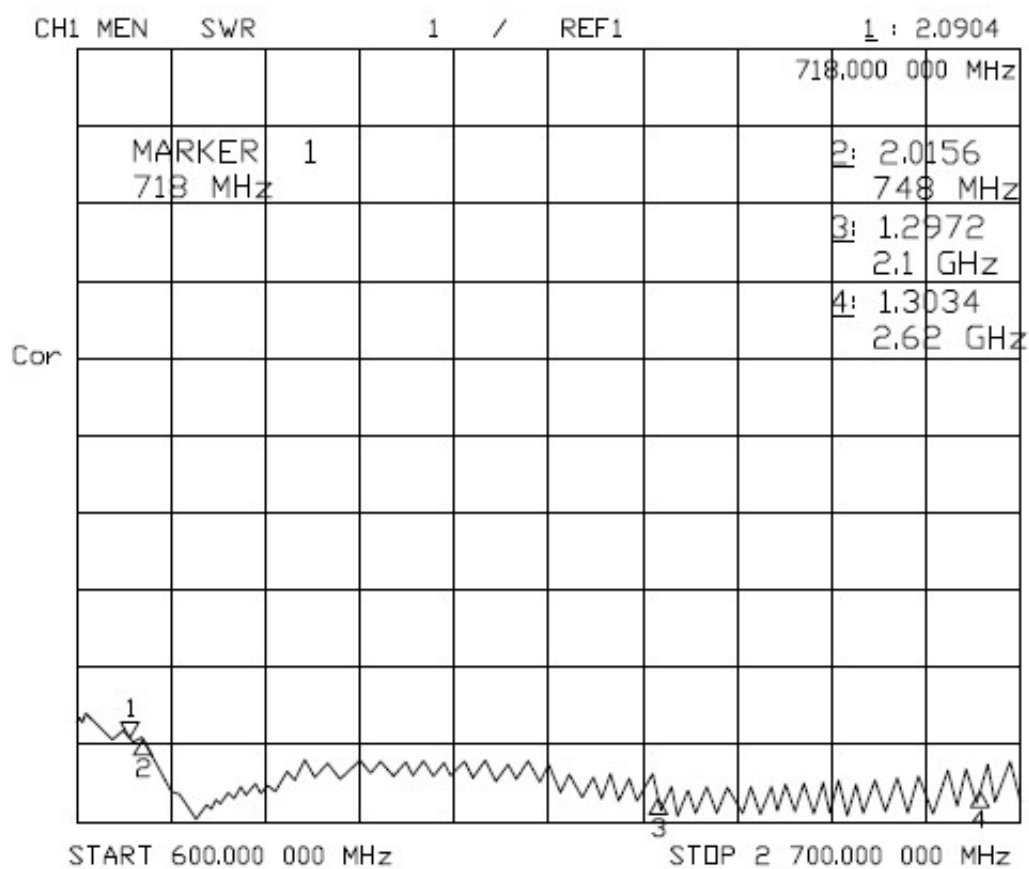


Model: DLLTE-P1

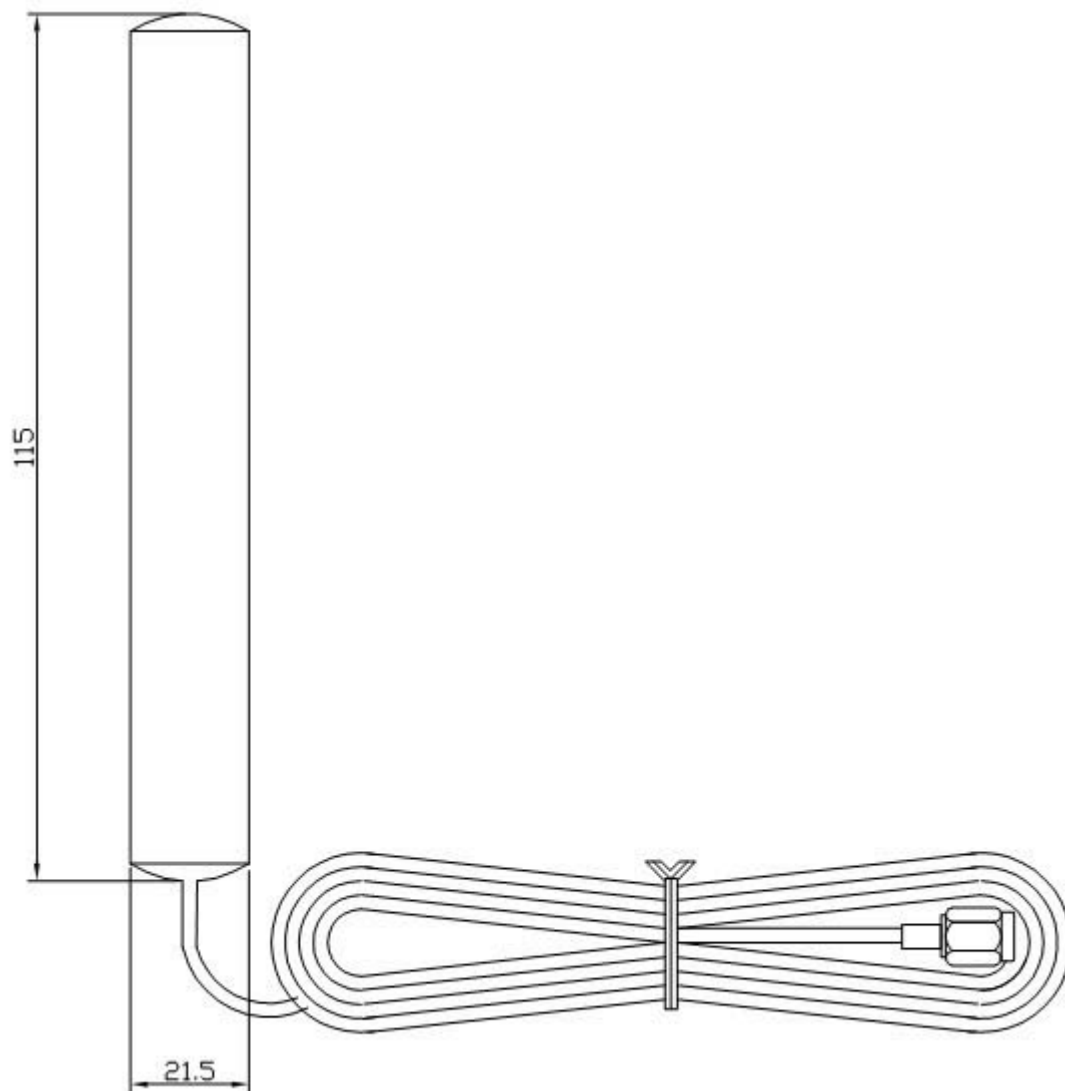
Main Technical Specifications

| | |
|---------------------|-------------------|
| Frequency Range | 700-2700MHz |
| Gain | 3dBi |
| VSWR | ≤2.0:1 |
| Input Impedance | 50ohm |
| Polarization Type | Vertical |
| Max Input power | 50w |
| Antenna Size | 115*21.5*5mm |
| Cable length | 3m |
| Connector Type | SMA straight male |
| Antenna Mounting | 3M Sticking |
| Antenna Color | Black |
| Working Temperature | -45°C to +85°C |
| Storage Temperature | -45°C to +85°C |

Characteristic curve

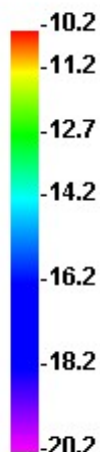
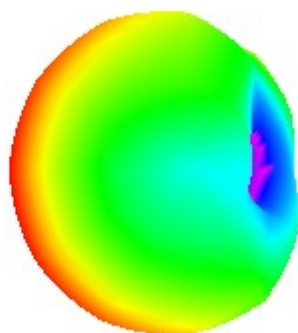


Size drawing

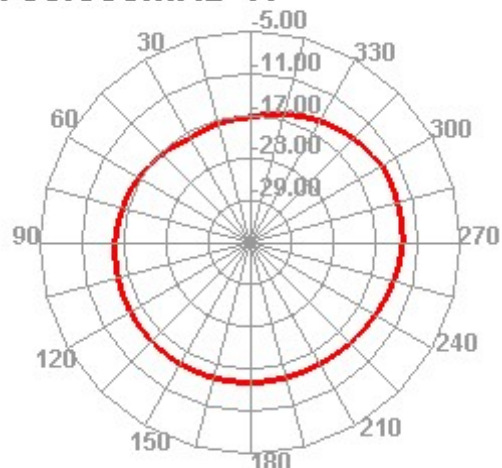


Pattern

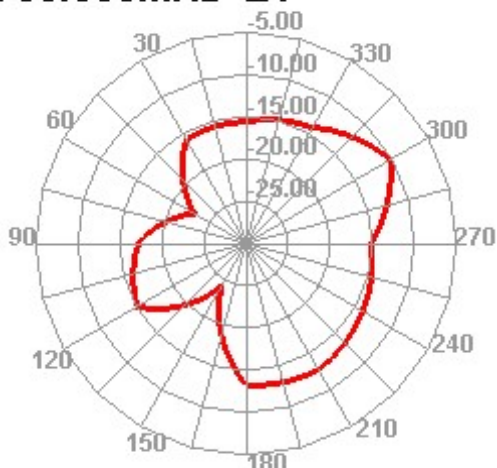
700.000MHz



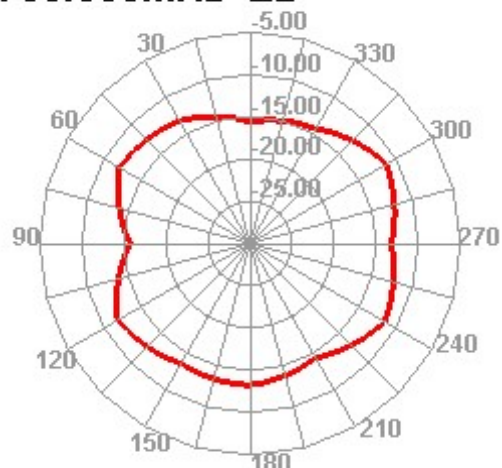
700.000MHz H



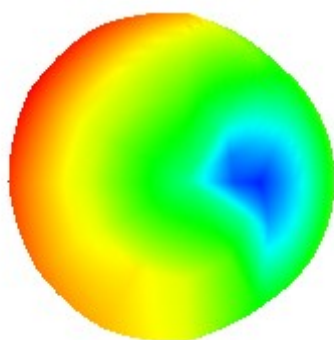
700.000MHz E1



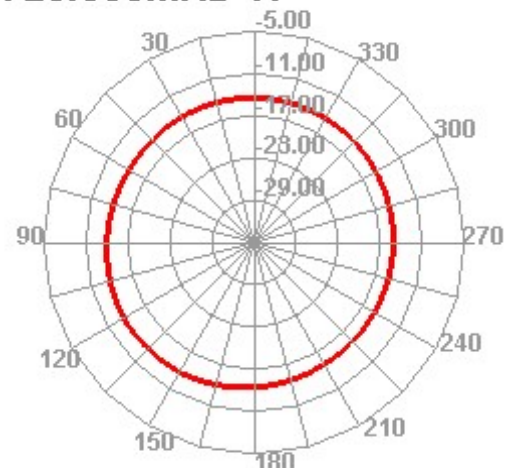
700.000MHz E2



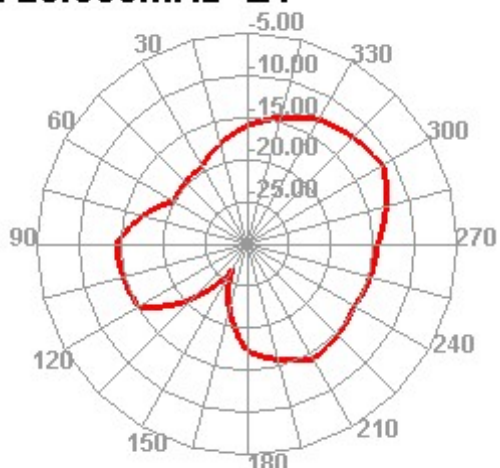
720.000MHz



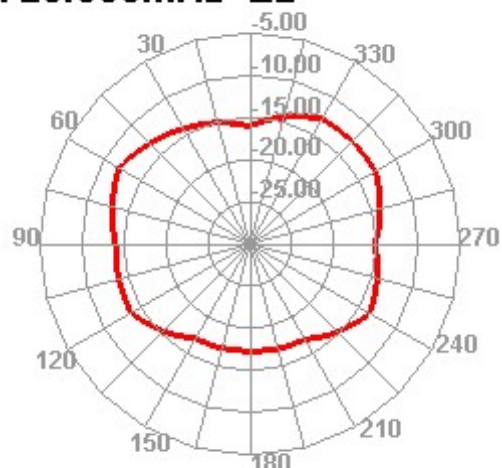
720.000MHz H



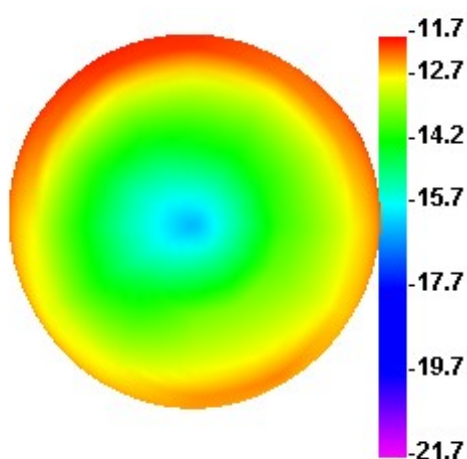
720.000MHz E1



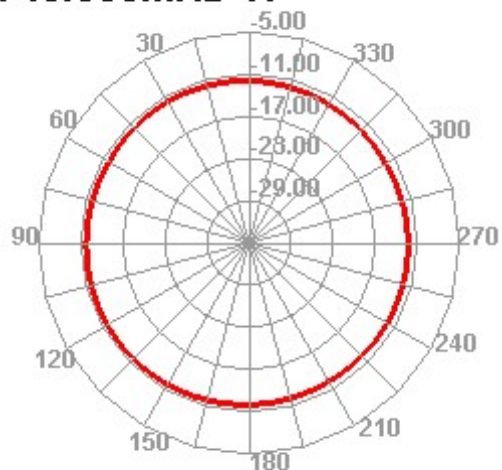
720.000MHz E2



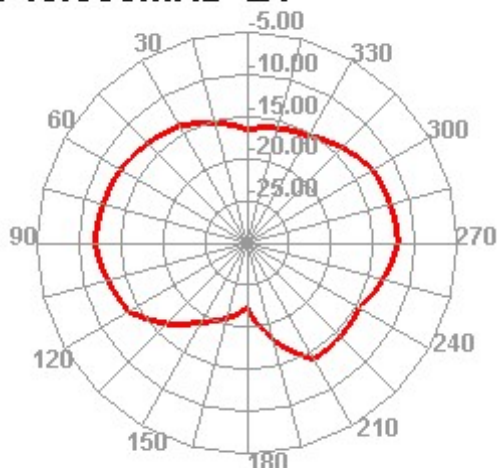
740.000MHz



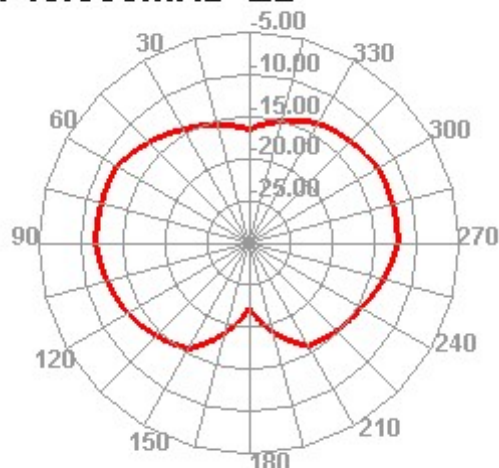
740.000MHz H



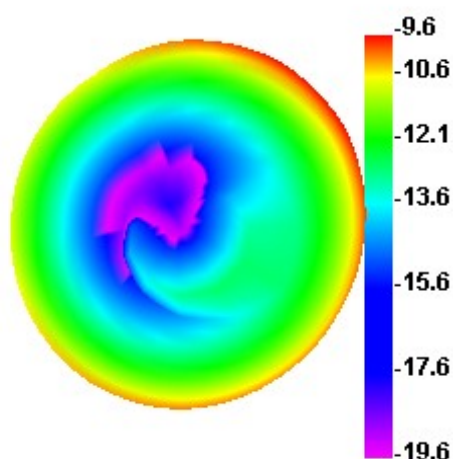
740.000MHz E1



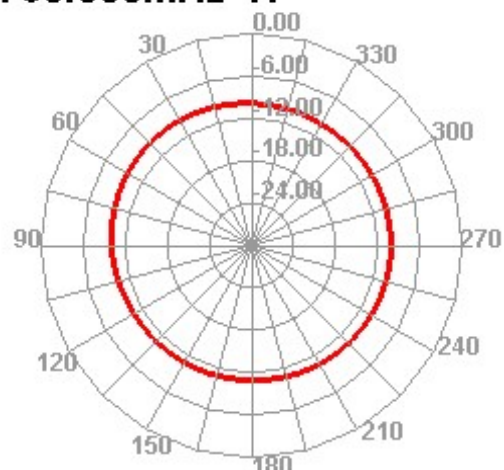
740.000MHz E2



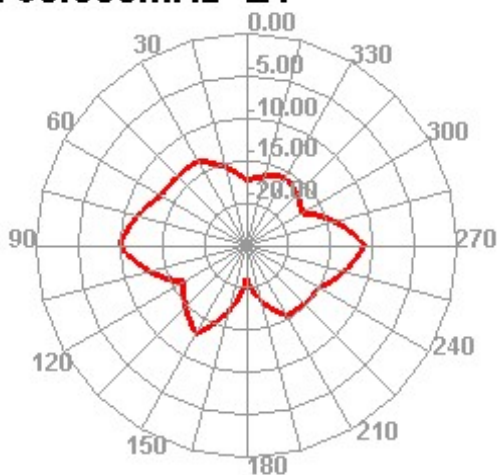
760.000MHz



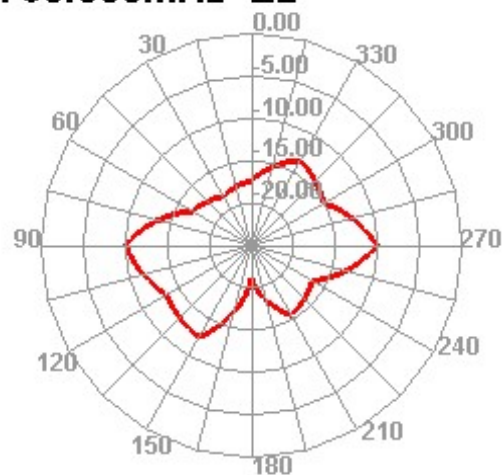
760.000MHz H



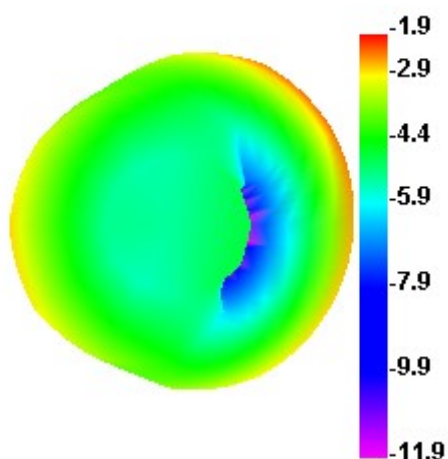
760.000MHz E1



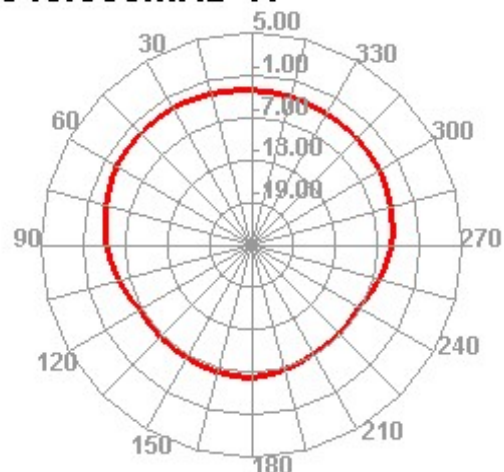
760.000MHz E2



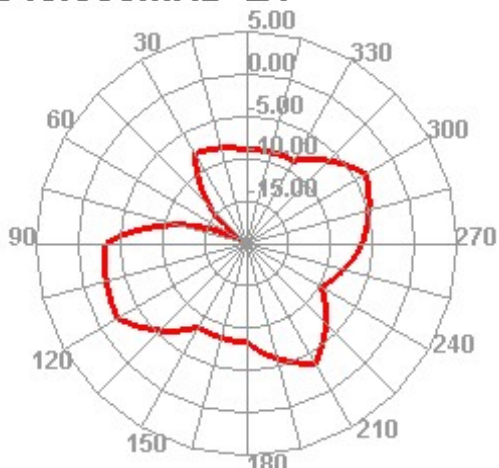
840.000MHz



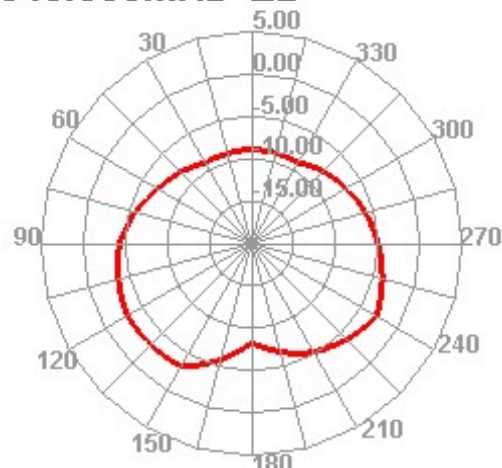
840.000MHz H



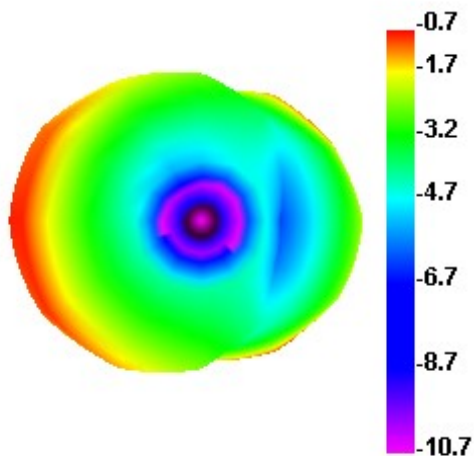
840.000MHz E1



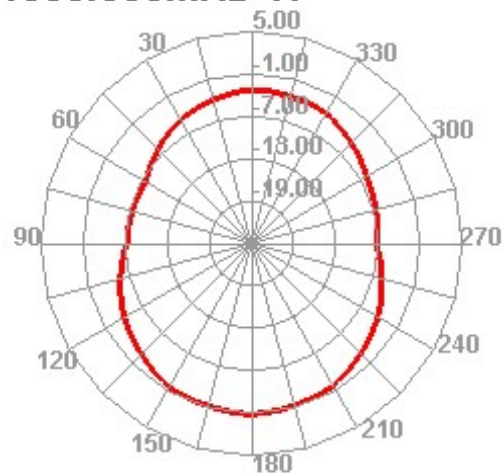
840.000MHz E2



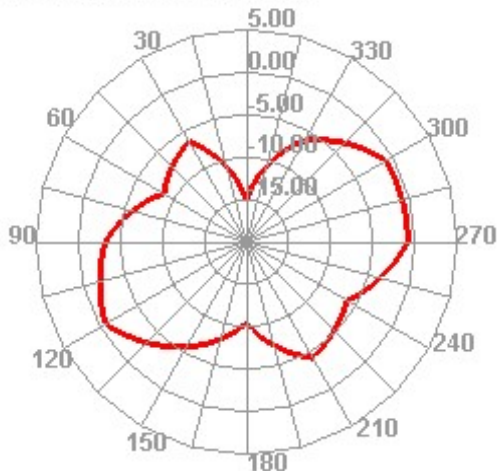
1000.000MHz



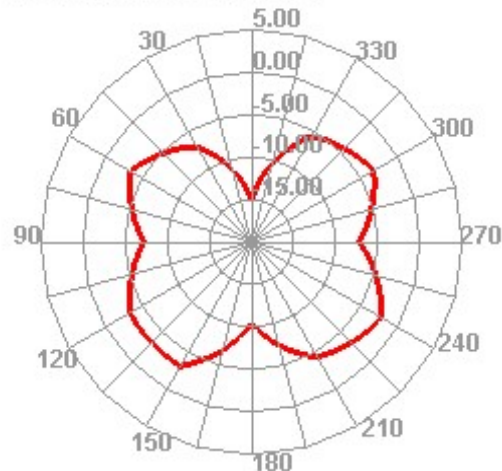
1000.000MHz H



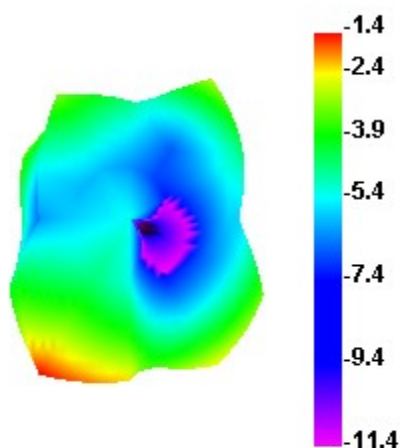
1000.000MHz E1



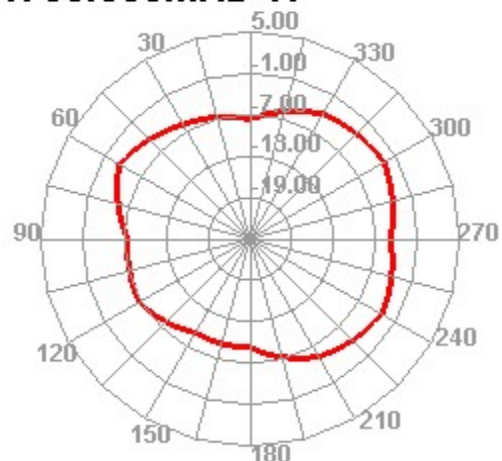
1000.000MHz E2



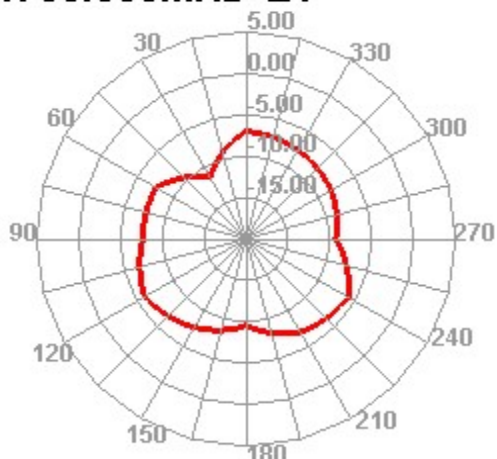
1700.000MHz



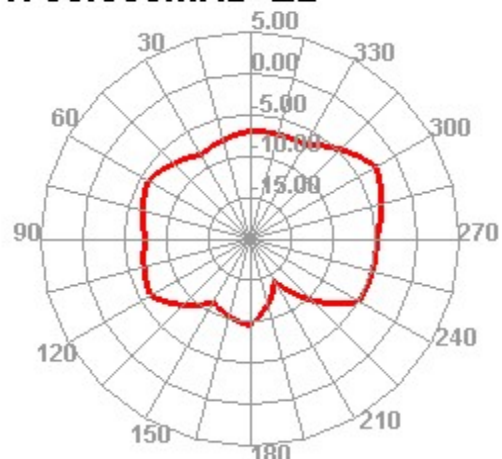
1700.000MHz H



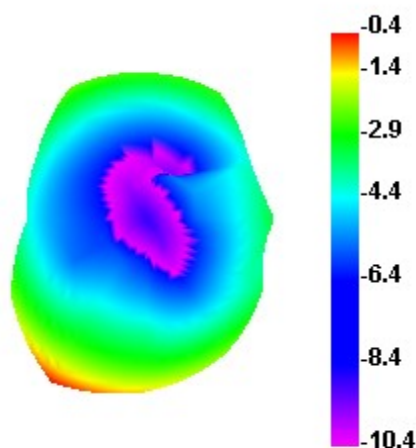
1700.000MHz E1



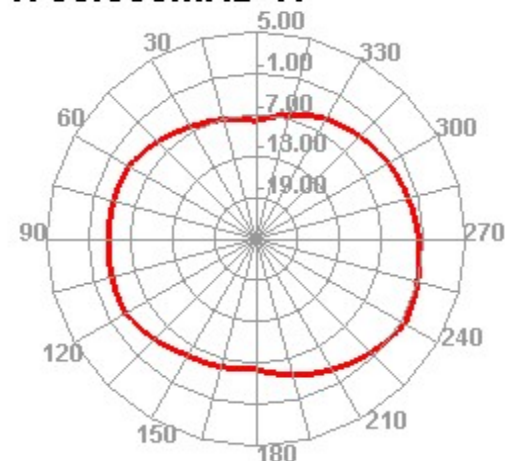
1700.000MHz E2



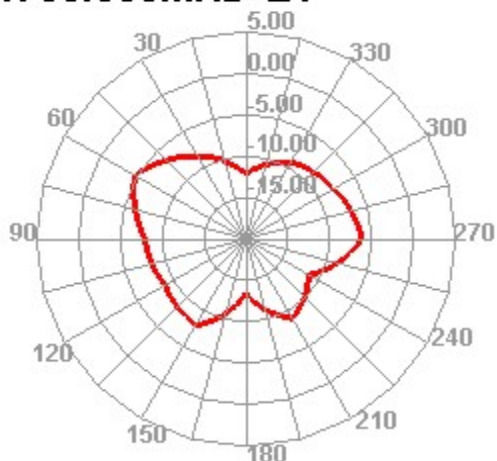
1750.000MHz



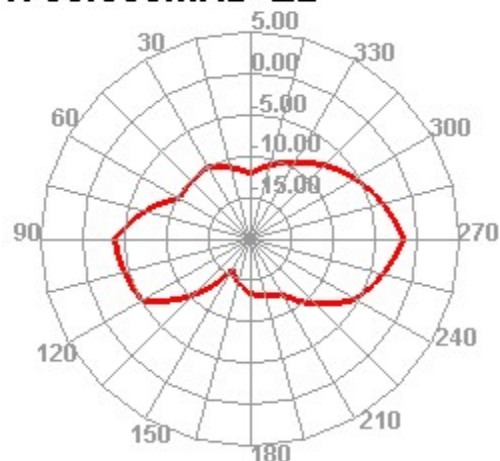
1750.000MHz H



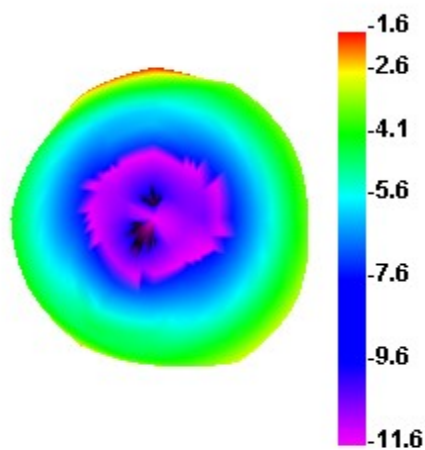
1750.000MHz E1



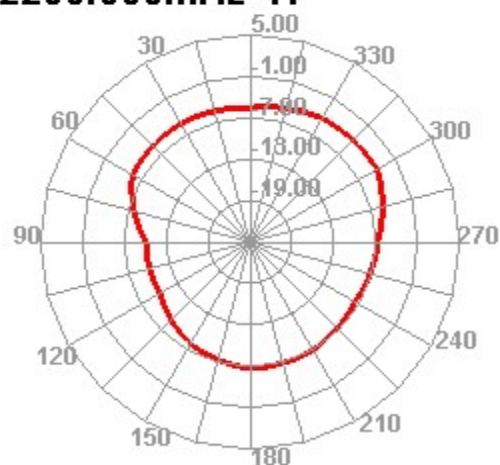
1750.000MHz E2



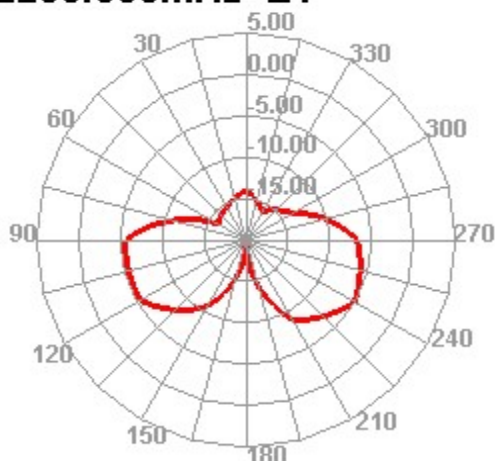
2200.000MHz



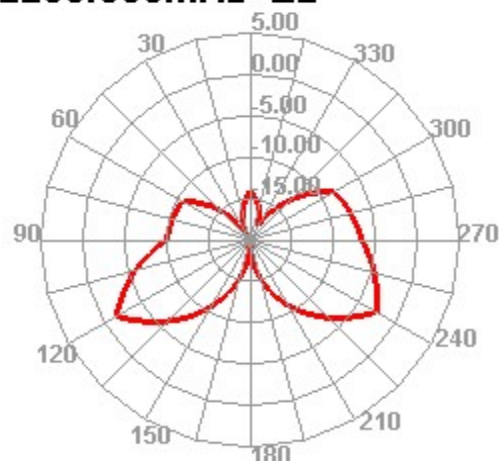
2200.000MHz H



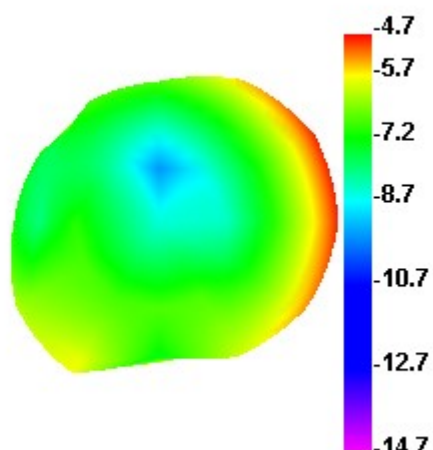
2200.000MHz E1



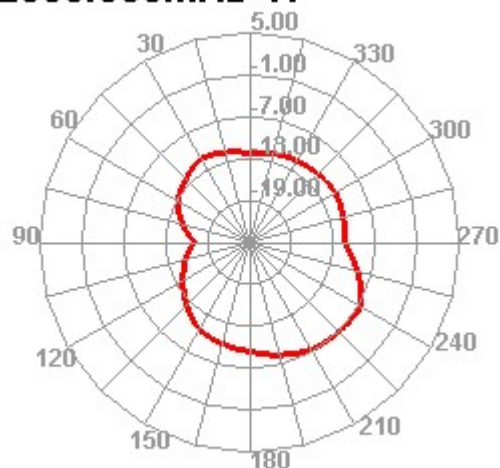
2200.000MHz E2



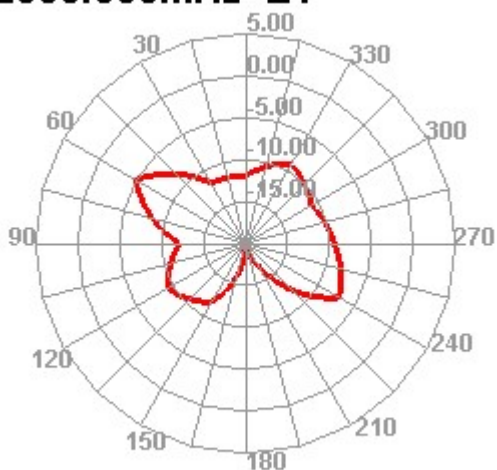
2500.000MHz



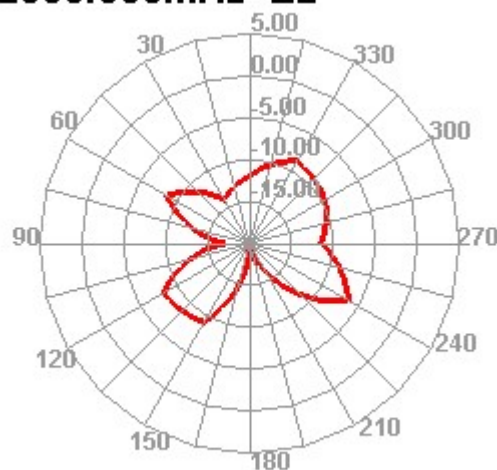
2500.000MHz H



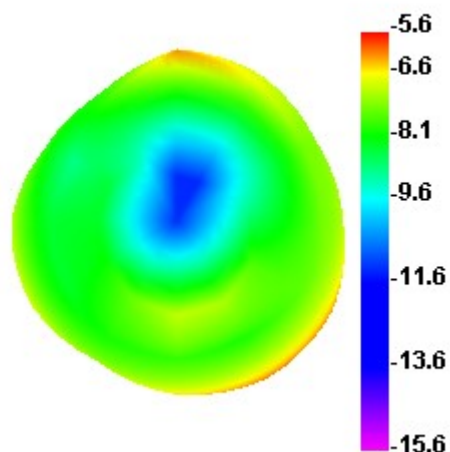
2500.000MHz E1



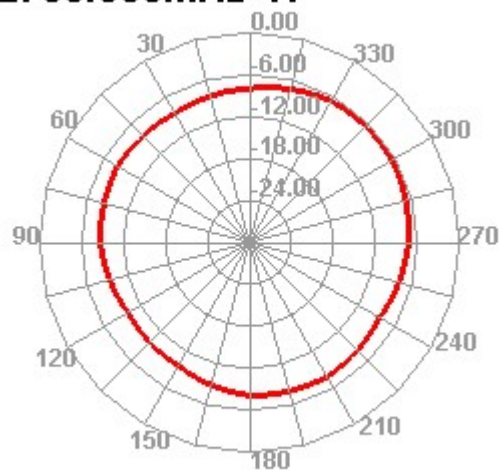
2500.000MHz E2



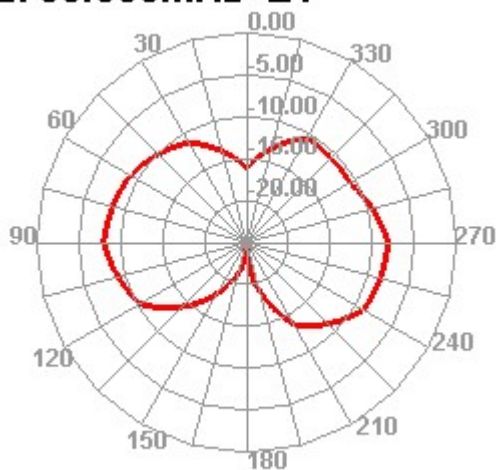
2700.000MHz



2700.000MHz H



2700.000MHz E1



2700.000MHz E2

